

Jade Zoom Series

Track & surface mounted fixtures



> Jade Zoom Series Track & Surface Mounted Fixtures

CLS Jade Zoom Series

The Jade Zoom is the ultimate fixture for illuminating collections in museums, galleries, science centres, art fairs and high-end retail applications.

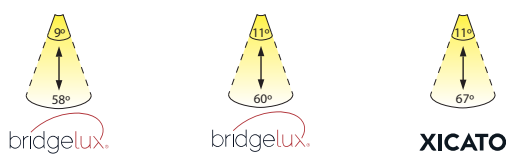
Due to its large zoom range, the Jade Zoom can be used virtually anywhere, regardless of the dimensions of an object and the distance to the object/painting.

The fixture has been developed in close collaboration with leading lighting designers from several countries, who were asked to state all the product features, that they would like to see in a fixture range. From a series of various designs, the current design was unanimously chosen by designers and architects with backgrounds in both museum- and retail lighting applications.

What makes the CLS Jade Zoom series so unique in terms of specifications and lighting experience?

Large zoom range

The Jade Zoom offers a remarkably large effective zoom range of no less than 9°-58°, 11°-60° or 11°-67°! (Depending on the LED light source). Up until now, no other manufacturer has been able to offer such a narrow beam angle in this type of fixture. Lighting designers worldwide now see a regularly recurring restriction in their designs finally lifted.



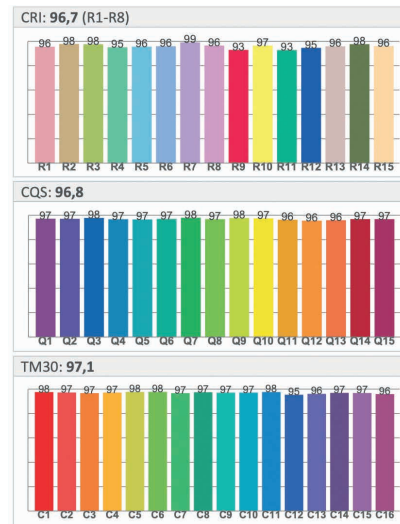
Large choice in LED lighting sources with excellent colour rendition

CLS offers designers a wide choice of available LED light modules. Where for some applications the highest possible light output is essential, in most of the museum applications the quality of the colour rendition is of utmost importance.

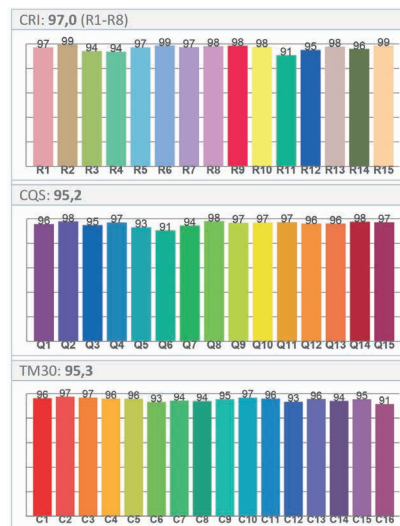
The Jade Zoom is available with a Xicato Artist-, or for CLS a special developed Bridgelux LED light source. The Xicato Artist series is the first choice of many light designers, when it comes to the quality of light. It offers a CRI of >98, with a R9 value of >95 (3000K version).

The Bridgelux LED source offers a CRI of >97 with a R9 value of >95 and has a spectrum that matches natural daylight. Please find below the values for the 3000K measurements of the Jade Zoom in combination with the available light sources. It is obvious that the colour rendition is of an exceptionally high quality. This is due to the quality of the LED light source, but also the very high optical purity of the CLS glass lens.

Bridgelux 3000K



Xicato Artist XTM 3000K



Jade Zoom Tunable White

The Jade Zoom is also available with a **spectacular Tunable White light source** that offers a control range from 2700K-6500K with a CRI of >98 and a R9 value of >95 on all colour points!





Project by Lichtpunt
National Maritime Museum Amsterdam, the Netherlands



Museum Het Valkhof, the Netherlands

| Because lighting is an art

> Jade Zoom Series Track & Surface Mounted Fixtures

High effective light output

Due to the unique CLS DFC lens, the Jade Zoom offers a higher effective light output than other comparable fixtures with zoom capability. The CLS DFC lens is a glass lens with a very high optical purity, combined with some unique features that contribute to a high level of light efficiency. LED light sources are available with initial light outputs up to 2500 lumen.

High level of visual comfort

The Jade Zoom is equipped with an internal snoot with a structured surface for minimizing glare effects.



Jade Zoom Super Spot

In our continuous quest to create the perfect Zoom spot, CLS now offers the Super Spot Optics (SSO) accessory. The SSO clicks onto an existing Jade Zoom and makes it possible to perfectly light objects from greater heights. The SSO accessory consists of 9 parts. The Jade SSO accessory is now available through your local CLS distributor.



Easy to adjust beam angle

The beam angle of the Jade Zoom can be adjusted extremely easy from the backside of the fixture. So, one never has it hands in front of the light beam, as is the case with most of the available zoom fixtures on the market.



Largest choice of control options on the market!

No other manufacturer offers more control options than CLS;

> Local dim

The local dim uses a very sophisticated driver circuit, resulting in the possibility to generate very low output levels.

> DMX 512

The Jade Zoom DMX can be controlled via the DMX 512 protocol. Each fixture can be addressed individually, allowing to program an intensity value for each fixture, that can be adjusted quickly at any time from a remote control system. In addition, the fixture offers 'memory on board' functionality. This means that a pre-programmed intensity value can be stored in the fixture's internal memory module. It is therefore not required to provide a continuous control signal to the fixtures.

The Jade Zoom DMX is compatible with both Global or Eutrac data bus rail systems.

> DALI

For applications where an existing DALI control infrastructure is present, CLS offers the option to fit the Jade Zoom with DALI compatible electronics.

> Casambi Bluetooth control

CLS offers Casambi Bluetooth control. Casambi is the world's leading company when it comes to wireless Bluetooth control. Through an easy to use app, users can control a large amount of settings. As the functionalities of the Casambi environment are expanded continuously, user get new exiting functionalities on a regular basis free of charge.

Some functionalities that could be interesting in a themed environment are the use of motion sensors, I beacons, calendar schedule functionalities and even control through the Cloud.

> Wireless DMX control

In many locations standard 3 phase rail systems have been installed in the past. Now CLS offers the chance to install controllable lights without the need to install new data bus rails.

CLS uses components from Wireless Solutions Sweden, that is known as the absolute expert in reliable wireless DMX solutions. Thousands of installations worldwide have been equipped with their systems, so one can be sure that the system will work flawless.





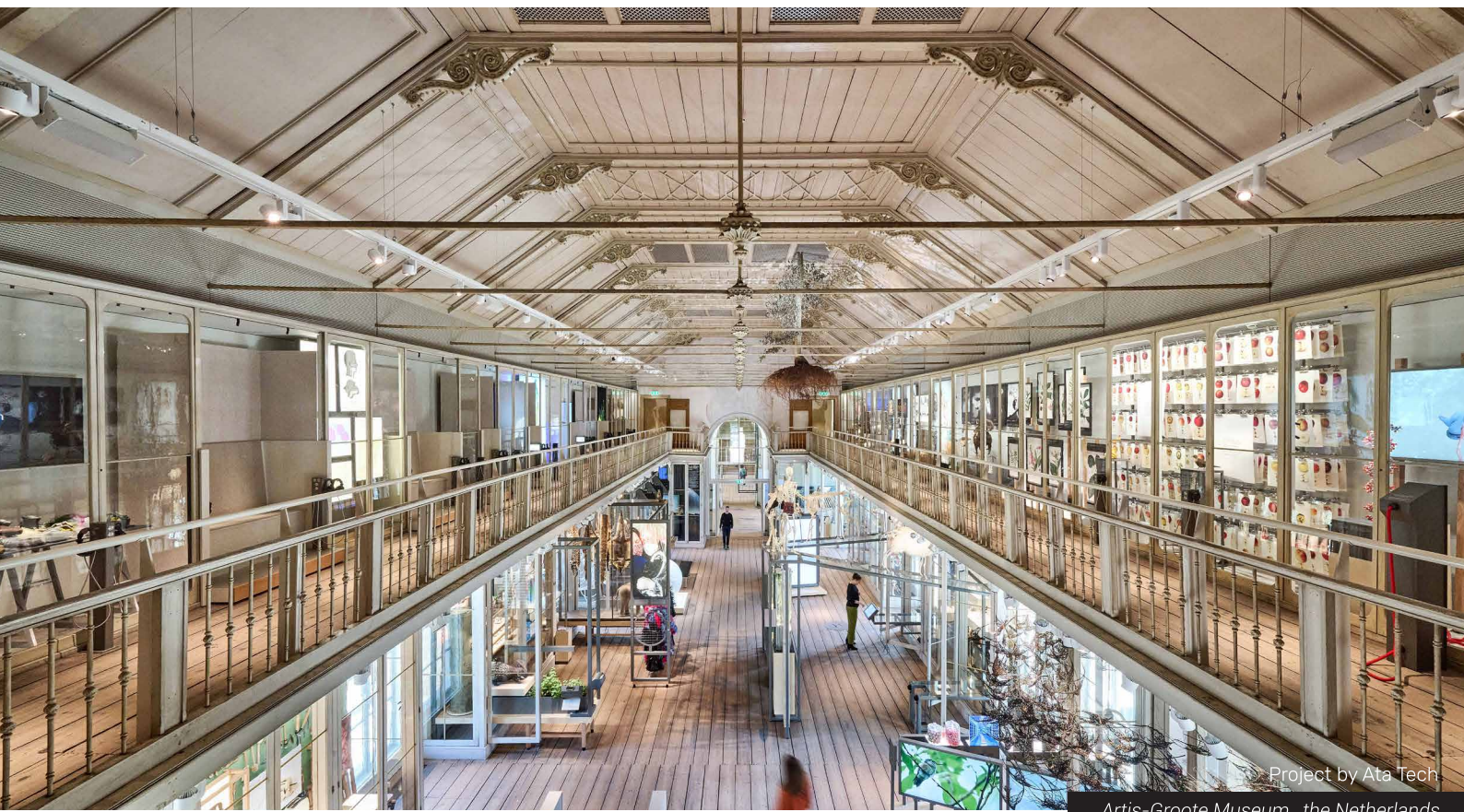
Project by Kossmanndejong
Photography Thijs Wolzak

Roman Villa Museum Somerset, United Kingdom



Project by Heinz Loopstra
Photography Mike Bink

Museum of WWII Resistance Amsterdam, The Netherlands



Project by Ata Tech

Artis-Groote Museum, the Netherlands

Choice of mounting versions

Different mounting versions are available. This means design consistency in nearly every project.

The Jade Zoom is available with either a Global or a Eutrac rail adapter in a standard or a data bus version.

Jade



The Jade B Zoom is fitted with a thread stud attachment. It is thus an ideal fixture for use with cable trays, metal ceilings and other similar mounting variants.

Jade B



In perfect harmony with each environment

The Jade Zoom is available in black, white and grey finish.



A sound investment

Components of the highest possible quality are used for the production of the Jade, without any compromise. The patented heat sink ensures optimum cooling of the light source, so that the potential 50.000 hour life length can actually be achieved.


Unlike many other suppliers on the market who only claim to do so, **CLS actually produces its fixtures in The Netherlands.** CLS belongs to a group of companies with more than 35 years of expertise in the professional lighting business. This provides additional reassurance for years to come.

Accessories

The following accessories are available:

- > Zoom Accessory holder for fitting correction-, colour-, and/or oval beam filters as well as the Honey comb louvre or the snoot segments.
- > Honey comb louvre.
- > Filter holder set.
- > Rotatable 4 way barndoor.
- > Oval beam shaper filter with filter holder set. Which is a replacement for traditional stripe glass filters.
- > A customizable snoot. As the snoot can be build up in segments of 2 cm up till a total length of 6 cm, designers can create a profile spot effect at different beam angles.
- > Super Spot Optics

Accessory overview

Choose your accessory on the left, you need the items marked with the  *

	 Y106221	 Y106202-X-1	 Y106222	 Y106225	 Y106223	 Y106224
 Barndoor						
 Honeycomb						
 Snoot						
 Filter set						
 Oval Beam set						

*All accessories can be combined together

Some examples of the Jade Zoom accessory combinations

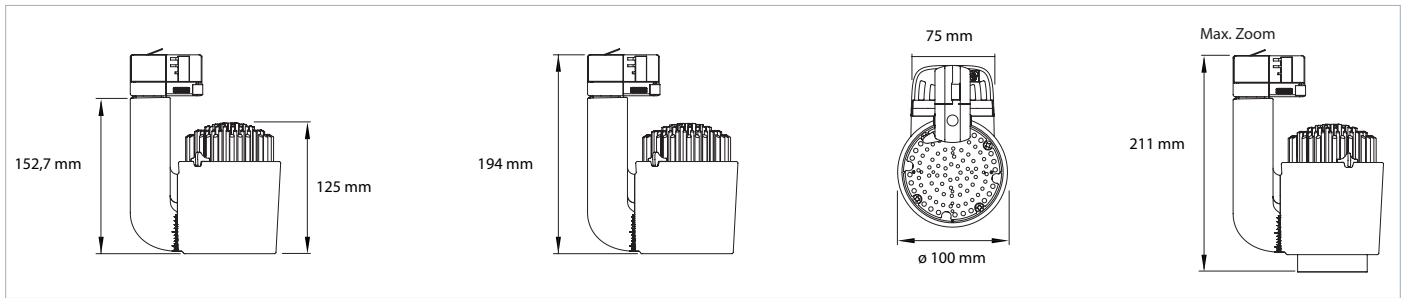


PLEASE NOTE, whenever the honeycomb louvre is being used in combination with a filter (oval beam, colour correction), the filter holder set is NOT needed. The honeycomb louvre keeps the filter in place.

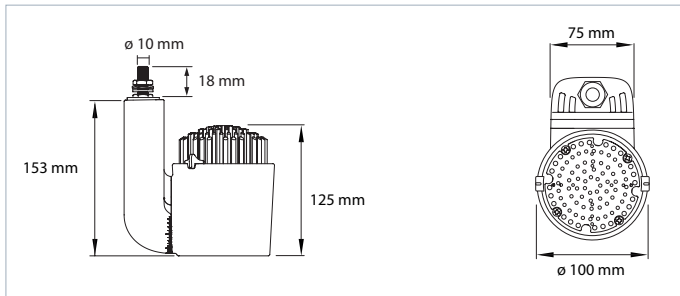
Each snoot section of 2 cm has a slot, where one can use a different accessory. The length of the snoot is max. 6 cm.

> Jade Zoom series Track & Surface Mounted Fixtures

Measurements Jade Track Zoom



Measurements Jade B Zoom



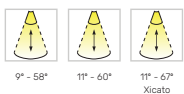
Technical specifications

LED:	Xicato XTM or Bridgelux LED Module	Swivel:	340° horizontal, 350° vertical
Available CCT:	Single colour : 2700K, 3000K, 3500K, 4000K Tunable White : 2700K~6500K	Housing:	Black, grey or white plastic (PC-ABS V0) Heatsink black or white coated aluminium
CRI:	Bridgelux : CRI >90 Xicato XTM : CRI >98	Zoom Range:	Xicato XTM : 11°~67° Bridgelux : 9°~58° Bridgelux : 11°~60°
Power supply:	100 ~ 240 VAC	IP value:	IP20
Power consumption:	Single Colour : Max. 25 Watt Tunable White : Max. 22 Watt	Warranty:	5 years
Ambient temperature:	-10 °C till 40 °C		

Colour & colour temperatures



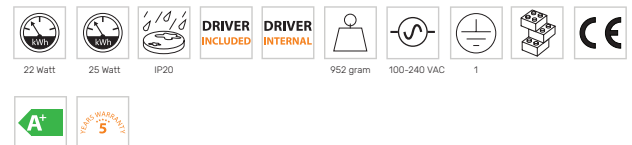
Optics



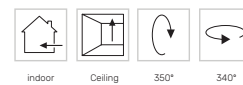
Housing & Finish



General specifications



Mounting options



Control options

